



Manor Court , Over Haddon, Bakewell DE45 1JE



Lettings

Manor Court

Over Haddon

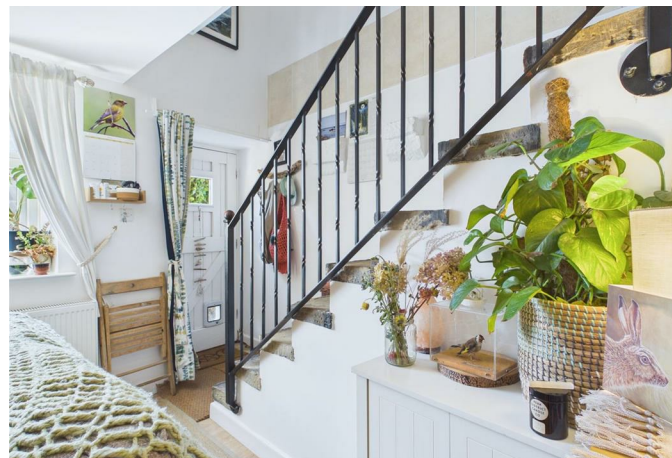
Per Month

£775 Per Month

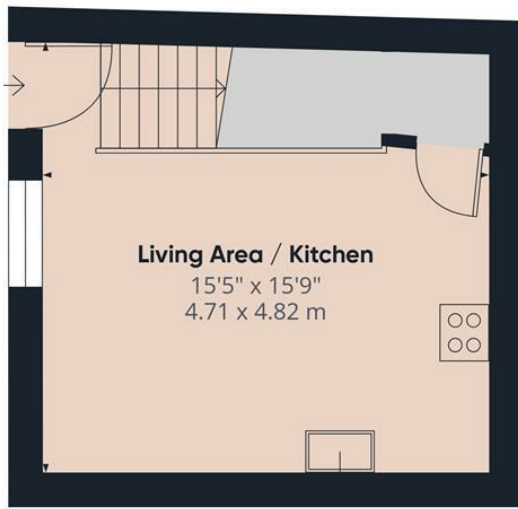
Embrace idyllic village life in this charming one-bedroom cottage, now available to let in picturesque Over Haddon. Perfectly positioned in the heart of the stunning Peak District, you get to enjoy peaceful countryside living while being just a short drive from all the amenities of Bakewell.

Inside, the home offers a cozy, open-plan living room and kitchen area. Upstairs, you will find a comfortable master double bedroom and a bright bathroom complete with a classic three-piece white suite and shower. To the front, a beautiful country-style courtyard garden provides the perfect spot to relax, and the property also includes the rare convenience of an allocated parking space.

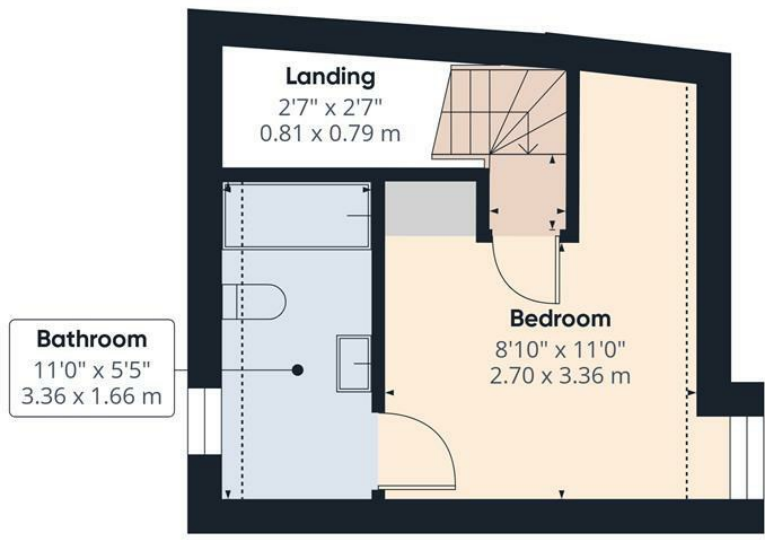
This property is offered unfurnished. Please note that smoking is not permitted within the property. The Energy Efficiency Rating is D and the Council Tax Band is A.







Ground Floor



Floor 1



Approximate total area⁽¹⁾
441 ft²
41 m²

Reduced headroom
18 ft²
1.7 m²

(1) Excluding balconies and terraces.

Reduced headroom
..... Below 5 ft/1.5 m

Calculations reference the RICS IPMS 3C standard. Measurements are approximate and not to scale. This floor plan is intended for illustration only.

GIRAFFE360

While we endeavour to make our sales particulars fair, accurate and reliable, they are only a general guide to the property and, accordingly, if there is any point, which is of particular importance to you, please contact the relevant office. The Agents have not tested any apparatus, equipment, fittings or services and so cannot verify they are in working order. The buyer is advised to obtain verification. Please note all the measurement details are approximate and should not be relied upon as exact. All plans, floor plans and maps are for guidance purposes only and are not to scale. Under no circumstances should they be relied upon as exact or for use in planning carpets and other such fixtures, fittings or furnishings. YOUR HOME IS AT RISK IF YOU DO NOT KEEP UP REPAYMENTS ON A MORTGAGE OR OTHER LOAN SECURED ON IT. 'A Life Assurance policy may be requested.' 'Written Quotations of credit terms available on request.'

Banner Cross
T: 0114 268 3241
E: bannercross@saxtonmee.co.uk
www.saxtonmee.co.uk

Hathersage
T: 01433 650009
E: hathersage@saxtonmee.co.uk

Bakewell
T: 01629 815307
E: bakewell@saxtonmee.co.uk

Matlock
T: 01629 828250
E: matlock@saxtonmee.co.uk



Lettings